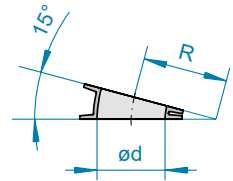
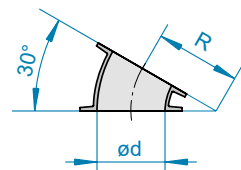


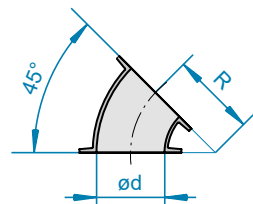
Cast-iron segment 5°



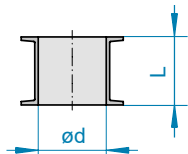
Cast-iron segment 15°



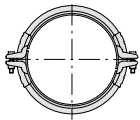
Cast-iron segment 30°



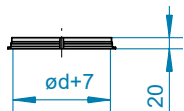
Cast-iron segment 45°



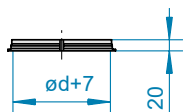
Cast-iron pipes



Pull-rings for cast-iron pipework



Angle flanges



Angle flanges, 1 cut

## CAST-IRON PIPEWORK

- Cast-iron pipework made from modular spheroidal graphite cast iron
- 7.5 mm wall thickness
- Powder-coated (RAL 7032)

- Internal diameters correspond to 3 mm thick pipework
- Connection using pull-rings for cast-iron pipes
- Combination with JACOB pipework with lip using angle flanges

### Cast-iron segments 5° and 15°

DN	$\varnothing d$	R	Cast-iron segments 5°		R	Cast-iron segments 15°	
			Item no.	€		Item no.	€
120	118				155	17121310	38.80
150	148	600	17151300	38.80	250	17151310	44.10
200	198	690	17201300	54.60	270	17201310	59.70
250	248	635	17251300	64.80	310	17251310	70.10
300	298	625	17301300	67.40	310	17301310	80.40

### Cast-iron segments 30° and 45°

DN	$\varnothing d$	R	Cast-iron segments 30°		R	Cast-iron segments 45°	
			Item no.	€		Item no.	€
120	118	110	17121320	49.20			
150	148	175	17151320	49.20	150	17151330	54.60
200	198	180	17201320	64.80	195	17201330	80.40
250	248	230	17251320	112.00	195	17251330	125.50
300	298	230	17301320	125.50	205	17301330	133.00

### Cast-iron pipes and pull-rings

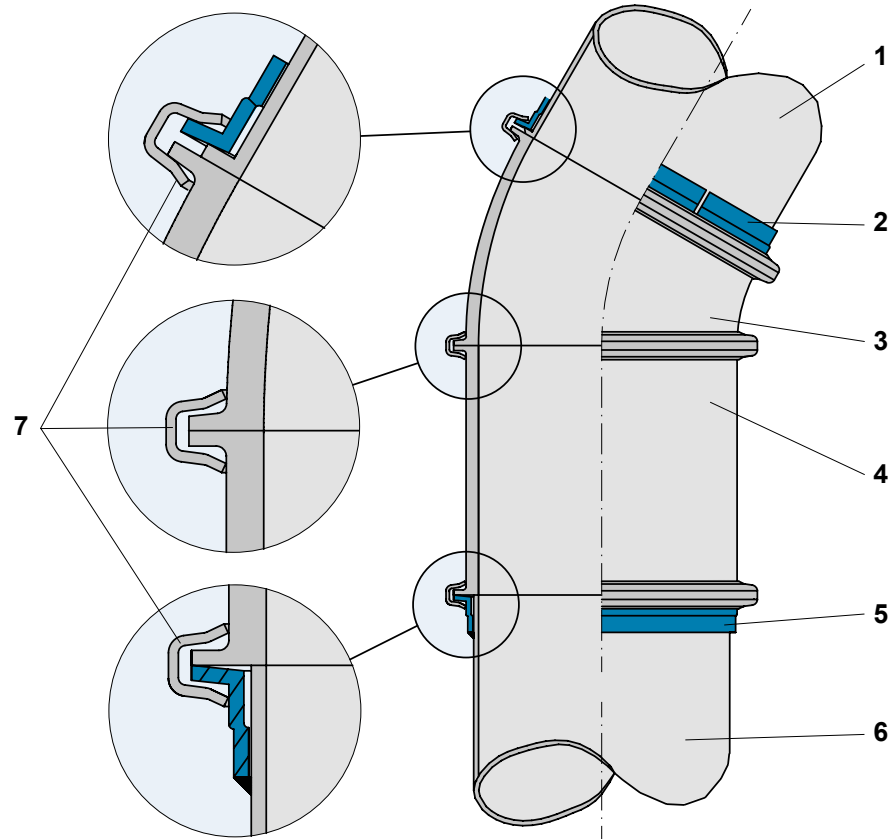
DN	$\varnothing d$	L	Cast-iron pipes		Pull-rings for cast-iron pipework, galvanised, with mastic sealant	
			Item no.	€	Item no.	€
120	118	150	17121040	64.60	17122382	9.60
150	148	150	17151040	69.70	17152382	11.00
200	198	200	17201040	125.00	17202382	11.90
250	248	250	17251040	132.50	17252382	13.70
300	298	300	17301040	174.00	17302382	15.30

### Angle flanges

DN	$\varnothing d$	Angle flanges for welding-on on site		Angle flanges, 1 cut	
		Item no.	€	Item no.	€
120	118	33121705	5.00	17121705	6.30
150	148	33151705	5.40	17151705	6.30
200	198	33201705	7.00	17201705	7.10
250	248	33251705	9.00	17251705	7.50
300	298	33301705	10.10	17301705	8.30



## INCORPORATING CAST-IRON PIPE COMPONENTS INTO THE MODULAR PIPEWORK SYSTEM



- 1 Steel pipe with lip
- 2 Angle flange (1 cut)
- 3 Cast-iron segment
- 4 Cast-iron pipe
- 5 Angle flange welded-on
- 6 Steel pipe
- 7 Pull-rings for cast-iron pipework

- Angle flange, 1 cut, is rotated on behind the lipped end of the existing JACOB pipe component and connected to the cast-iron pipe with the pull-ring for cast-iron pipes.
- Alternatively: Use of an angle flange for welding-on on site. One pipe end without a lip is necessary to enable the angle flange to be fitted. This can be created when connecting pipes are shortened, for example.