



la meccanica
Technology & Creativity at your Service

CLM 420 125HP

PELLET
MILL

Feeds



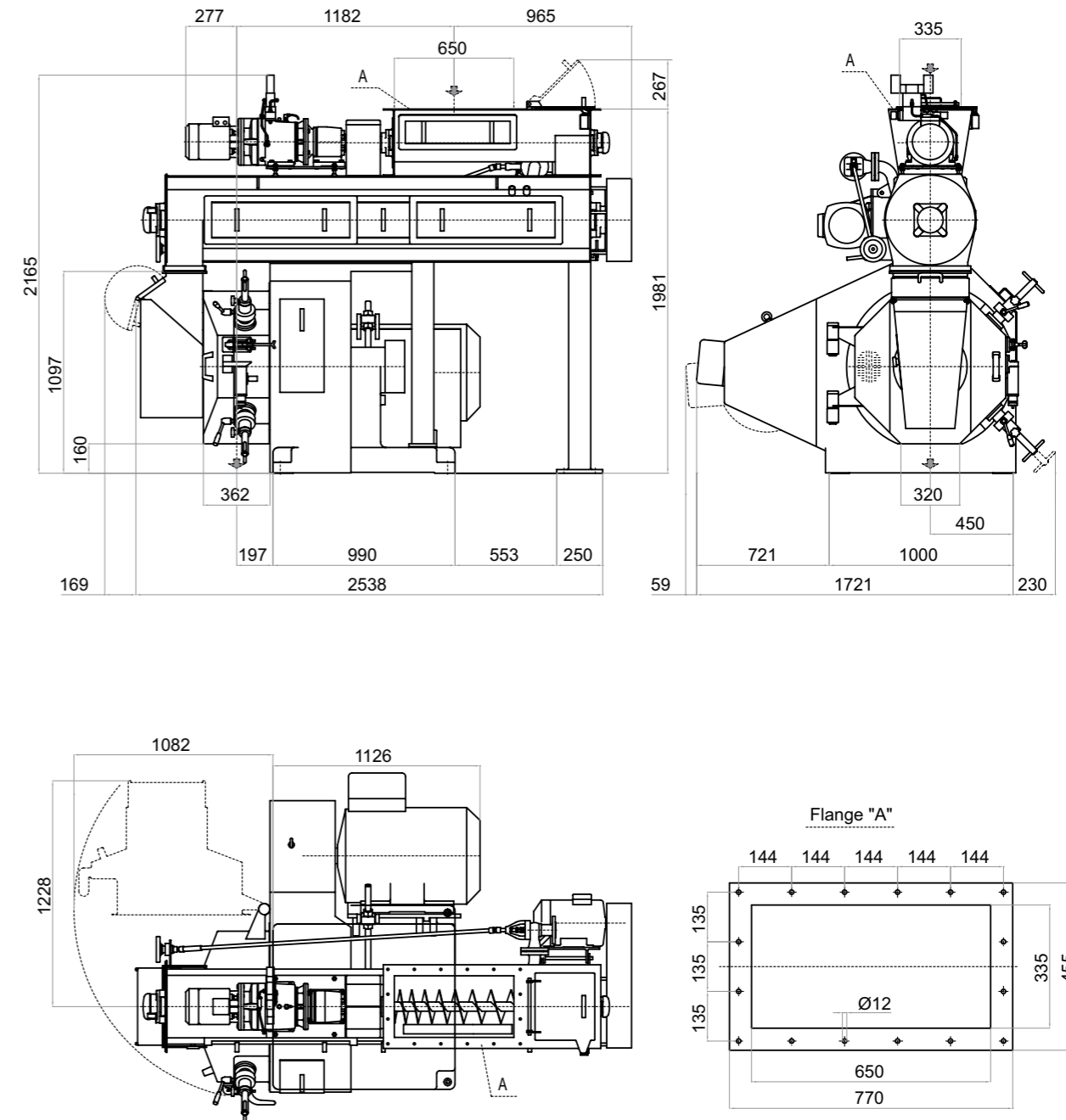
CLM
400
125HP

HORIZONTAL
VERSION

ANIMAL FEEDS

PELLET MILL CLM 420 125hp

| PELLET MILL | PRESSE A GRANULAIRE | PRESSA CUBETTATRICE | PRENSA GRANULADORA | CLM 420 125HP | | |
|------------------------------|-------------------------------------|--|---|-------------------------------------|-------|-------------|
| Screw feeder | Vis d'alimentation | Coclea di alimentazione | Còclea de alimentaciòn | C180 | | |
| Diameter | Diamètre | Diametro | Diàmetro | mm | 180 | in 7,09 |
| Motor power | Puissance | Potenza | Potencia motor | kW | 2,2 | hp 3,0 |
| Speed | Vitesse | Velocità | Velocidad | 0-158 rpm | | |
| Conditioner | Conditionneur | Condizionatore | Acondicionator | M 400.2310 | | |
| Diameter | Diamètre | Diametro | Diàmetro | mm | 400 | in 15,7 |
| Length | Longeur | Lunghezza | Longitud | mm | 2310 | in 90,9 |
| Volum | Volume | Volume | Volumen | dm³ | 290,1 | ft³ 10,2 |
| Motor power | Puissance | Potenza | Potencia motor | kW | 9 | hp 12,5 |
| Pellet mill Bloc | Bloc Presse | Blocco Pressa | Bloque prensa | CLM 420 125HP | | |
| Main motor power | Puissance moteur principal | Potenza motore principale | Motor Principal | kW | 75 | hp 100 |
| Main pulley | Poulie conduit | Puleggia cond. | Polea principal | mm | 820 | in 32,0 |
| Die speed | Vitesse filiere | Velocità filiera | Velocidad matriz | m/sec | 6,0 | ft/sec 19,7 |
| Belts | Courroies | Cinghie | Correas | n.12 belts type 5V-1600 | | |
| Die | Filiere | Trafila | Matriz | Die Lamec 420.108 | | |
| Inner diameter | Diamètre int. | Diametro interno | Diàmetro int. | mm | 420 | in 16,54 |
| Working width | Bande de travail | Larghezza utile | Anchura de trabajo | mm | 108 | in 4,25 |
| Total width | Largeur totale | Larghezza totale | Anchura total | mm | 152 | in 5,98 |
| Working surface | Surface de travail | Superficie utile | Superficie útil | dm² | 14,24 | in² 220,8 |
| Die | Filiere | Trafila | Matriz | Die Lamec 420.138 | | |
| Inner diameter | Diamètre int. | Diametro interno | Diàmetro int. | mm | 420 | in 16,54 |
| Working width | Bande de travail | Larghezza utile | Anchura de trabajo | mm | 138 | in 5,43 |
| Total width | Largeur totale | Larghezza totale | Anchura total | mm | 182 | in 7,17 |
| Working surface | Surface de travail | Superficie utile | Superficie útil | dm² | 18,20 | in² 282,1 |
| Roll type | Galets | Rulli tipo | Rodillos | Rolls Lamec 420.108 & Lamec 420.138 | | |
| N. rolls | N. de galets | N. rulli | N. rodillos | 2 | | |
| Diameter | Diamètre | Diametro | Diàmetro | mm | 206 | in 8,11 |
| WEIGHTS | POIDS | PESI | PESOS | | | |
| Bloc press | Bloc press | Blocco pressa | Peso del bloque | | | |
| Without main motor | Sans moteur principal | Motore principale escluso | Sin el motor principal | kg | 1.167 | lb 2.572 |
| With main motor | Avec moteur principal | Motore principale incluso | Con el motor principal | kg | 2.299 | lb 5.067 |
| Screw feeder and conditioner | Vis d'alimentation et conditionneur | Coclea di alimentazione e condizionatore | Peso del alimentador y del acondicionador | kg | 806 | lb 1.776 |
| Total Weight | Poids Total | Peso totale | Peso total | | | |
| Main motor excluded | Moteur principal exclu | Motore principale escluso | Motor principal excluido | kg | 1.923 | lb 4.238 |
| Main motor included | Moteur principal inclu | Motore principale incluso | Motor principal incluido | kg | 3.105 | lb 6.843 |



CLM
400
125HP

THIS IS THE INTERMEDIATE VERSION

of the series "420" units and uses interchangeable series 420 spare parts. It can handle power of up to 90 kW (125 hp). It is an excellent model for small feed producers, ensuring high quality pellets. It is often used for the production of the fish feed.

The pellet mill can handle two different size dies:

- narrow die, Lamec 420.108 (to work feed which is difficult to pellet)
- wide die, Lamec 420.138 (to work cattle and bird feed).

Capacity: 4,0 - 6,0 t/h

Overall dimension: 1545 x 2695 x 2050 mm



ANIMAL FEEDS

la meccanica
Technology & Creativity at your Service



LA MECCANICA SRL DI REFFO

administration and production: via nicolini, 1
loc. facca - 35013 cittadella - pd - italy
tel: +39 049 9419000 - fax: +39 049 5972171
lameccanica@lameccanica.it



www.lameccanica.it

Silokonsult
PROCESSTEKNIK SWEDEN AB

Kämpagatan 1
SE-532 36 Skara
+46 511 10365
info@silokonsult.se
www.silokonsult.se