



la meccanica  
Technology & Creativity at your Service

# CLM 304 60HP

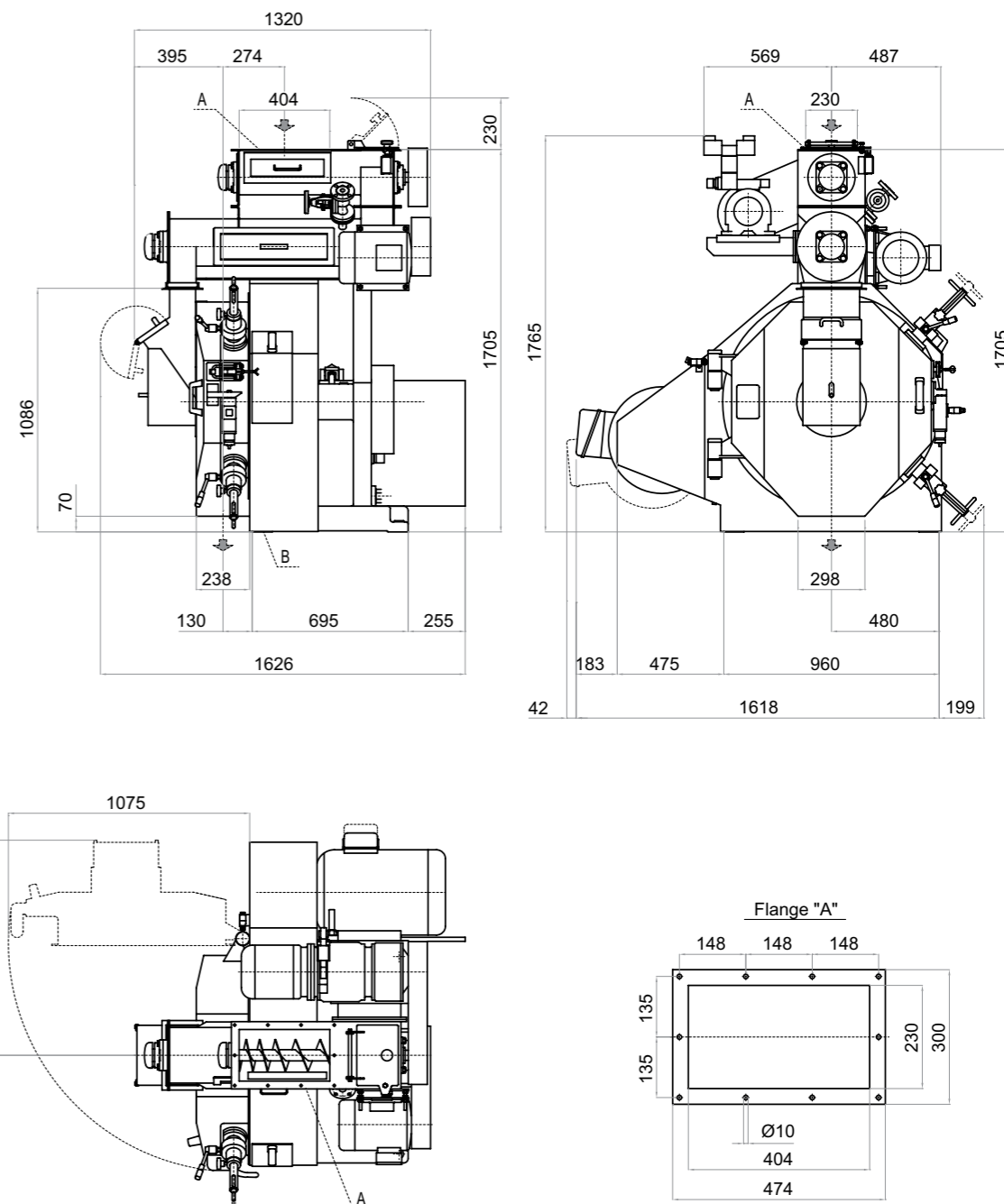
PELLET  
MILL

Feeds



## PELLET MILL CLM 304 60hp

PELLET MILL	PRESSE A GRANULAIRE	PRESSA CUBETTATRICE	PRENSA GRANULADORA	CLM 304 60HP			
Screw feeder	Vis d'alimentation	Coclea di alimentazione	Còclea de alimentaciòn	<b>C145</b>			
Diameter	Diamètre	Diámetro	Diámetro	mm	145	in	5,71
Motor power	Puissance	Potenza	Potencia motor	kW	1,5	hp	2,0
Speed	Vitesse	Velocità	Velocidad	0-158 rpm			
Conditioner	Conditionneur	Condizionatore	Acondicionator	<b>M 242.1010</b>			
Diameter	Diamètre	Diámetro	Diámetro	mm	242	in	9,5
Lenght	Longeur	Lunghezza	Longitud	mm	1.010	in	39,8
Volum	Volume	Volume	Volumen	dm <sup>3</sup>	46,43	ft <sup>3</sup>	1,6
Motor power	Puissance	Potenza	Potencia motor	kW	4	hp	5,5
Pellet mill Bloc	Bloc Presse	Blocco Pressa	Bloque prensa	<b>CLM 304 60HP</b>			
Main motor power	Puissance moteur principal	Potenza motore principale	Motor Principal	kW	37	hp	50
					45		60
Main pulley	Poulie conduit	Puleggia cond.	Polea principal	mm	880	in	34,0
Die speed	Vitesse filiere	Velocità filiera	Velocidad matriz	m/sec	6,0	ft/sec	19,7
				m/sec	7,5	ft/sec	24,6
Belts	Courroies	Cinghie	Correas	n.8 belts type 5V-1320			
Die	Filiere	Trafila	Matriz	<b>Die Lamec 304.058</b>			
Inner diameter	Diamètre int.	Diámetro interno	Diámetro int.	mm	304	in	11,97
Working width	Bande de travail	Larghezza utile	Anchura de trabajo	mm	58	in	2,28
Total width	Largeur totale	Larghezza totale	Anchura total	mm	95	in	3,74
Working surface	Surface de travail	Superficie utile	Superficie útil	dm <sup>2</sup>	5,54	in <sup>2</sup>	85,8
Die	Filiere	Trafila	Matriz	<b>Die Lamec 304.078</b>			
Inner diameter	Diamètre int.	Diámetro interno	Diámetro int.	mm	304	in	11,97
Working width	Bande de travail	Larghezza utile	Anchura de trabajo	mm	78	in	3,07
Total width	Largeur totale	Larghezza totale	Anchura total	mm	120	in	4,72
Working surface	Surface de travail	Superficie utile	Superficie útil	dm <sup>2</sup>	7,45	in <sup>2</sup>	115,4
Roll type	Galets	Rulli tipo	Rodillos	<b>Rolls Lamec 304.058 &amp; Lamec 304.078</b>			
N. rolls	N. de galets	N. rulli	N. rodillos	2			
Diameter	Diamètre	Diámetro	Diámetro	mm	150	in	5,9
<b>WEIGHTS</b>	<b>POIDS</b>	<b>PESI</b>	<b>PESOS</b>				
Bloc press	Bloc press	Blocco pressa	Peso del bloque				
Without main motor	Sans moteur principal	Motore principale escluso	Sin el motor principal	kg	1.085	lb	2.390
With main motor	Avec moteur principal	Motore principale incluso	Con el motor principal	kg	1.400	lb	3.085
Screw feeder and conditioner	Vis d'alimentation et conditionneur	Coclea di alimentazione e condizionatore	Peso del alimentador y del acondicionador	kg	500	lb	1.100
Total Weight	Poids Total	Peso totale	Peso total				
Main motor excluded	Moteur principal exclu	Motore principale escluso	Motor principal excluido	kg	1.604	lb	3.535
Main motor included	Moteur principal inclu	Motore principale incluso	Motor principal incluido	kg	1.874	lb	4.130



CLM  
304  
60HP

### IN THE 1950'S AND 1960'S

this was the most widely sold model. It is still one of the most interesting model for small production units, particularly in Central America and North Africa. It guarantees high quality pellets even with such difficult products such as fish feed.

The pellet mill can handle two different size dies:

- narrow die, Lamec 304.058 (to work feed which is difficult to pellet)
- wide die, Lamec 304.078 (to work cattle and bird feed).

Capacity: 1,5 - 2,5 t/h

Overall dimension: 1445 x 1440 x 1700 mm



ANIMAL FEEDS

la meccanica  
Technology & Creativity at your Service



LA MECCANICA SRL DI REFFO

administration and production: via nicolini, 1  
loc. facca - 35013 cittadella - pd - italy  
tel: +39 049 9419000 - fax: +39 049 5972171  
lameccanica@lameccanica.it



[www.lameccanica.it](http://www.lameccanica.it)

**Silokonsult**  
PROCESSTEKNIK SWEDEN AB

Kämpagatan 1  
SE-532 36 Skara  
+46 511 10365  
info@silokonsult.se  
www.silokonsult.se