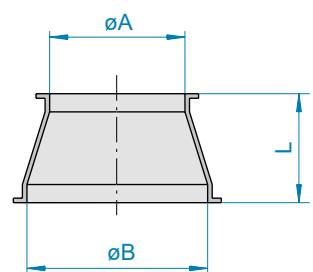
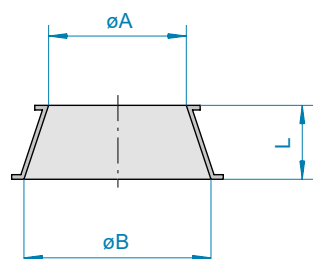




CONE PIECES

1330

- Diameter A + B = internal diameter with wall thickness of 1.5 mm
- Cone end partly cylindrical
- From DN 450 to 560 mm, dimensions for 2 mm pipework

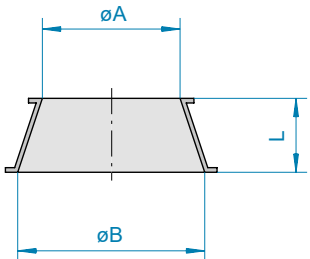


■ Cone end partly cylindrical

Powder-coated (dimensions for 1.5 mm pipework)

DN	A	B	L	kg	1.5 mm powder-coated		3 mm powder-coated	
					Item no.	€	Item no.	€
60-80	57	77	60	0.17	11001488	10.50		
60-100	57	100	100	0.25	11001492	10.60		
80-100	77	100	100	0.35	11001450	10.70		
80-120	77	120	80	0.35	11001478	12.10		
80-140	77	136	120	0.55	11001479	12.30		
80-150	77	150	140	0.65	11001489	13.00		
100-120	100	120	60	0.30	11001451	11.80		
100-140	100	136	100	0.50	11001459	13.40		
100-150	100	150	95	0.50	11001452	12.10		
100-175	100	175	120	0.70	11001464	13.60		
100-200	100	200	120	0.75	11001453	16.80		
100-250	100	250	200	1.45	11001454	19.90		
120-140	120	136	100	0.55	11001466	15.20		
120-150	120	150	150	0.85	11001455	12.50	13001455	35.80
120-175	120	175	100	0.65	11001456	13.90	13001456	37.30
120-200	120	200	120	0.80	11001457	17.20	13001457	40.10
120-250	120	250	150	1.20	11001458	17.80	13001458	41.60
140-150	136	150	100	0.60	11001467	15.60		
140-175	136	175	100	0.65	11001468	17.60		
140-200	136	200	150	1.05	11001469	19.20		
150-175	150	175	100	0.60	11001460	14.10	13001460	32.50
150-200	150	200	100	0.75	11001461	13.70	13001461	38.80
150-224	150	220	150	1.15	11001472	20.90		
150-250	150	250	150	1.10	11001462	17.80	13001462	41.60
150-300	150	300	200	1.85	11001463	23.30	13001463	47.30
175-200	175	200	100	0.80	11001465	14.90	13001465	43.10
175-224	175	220	100	0.85	11001473	20.20		
200-224	200	220	100	0.85	11001474	20.90		
200-250	200	250	120	1.10	11001470	17.20	13001470	45.00
200-300	200	300	150	1.55	11001471	22.40	13001471	48.00
224-250	220	250	100	1.00	11001476	23.00		
224-300	220	300	150	1.60	11001477	26.90		
250-280	250	277	120	1.30	11001960	25.20		
250-300	250	300	150	1.65	11001475	22.40	13001475	51.50
250-350	250	350	200	2.20	11001484	34.00	13001484	61.20
280-300	277	300	100	1.22	11001961	26.40		
300-315	300	312	100	1.30	11001962	33.50		
300-350	300	350	200	2.55	11001480	37.60	13001480	65.00
300-400	300	399	200	2.75	11001481	42.30	13001481	70.40
315-350	312	350	120	1.65	11001963	36.50		
350-400	350	399	200	2.95	11001482	47.80	13001482	76.30

■ Shock explosion proof tested up to 3 bar



DN	A	B	L	kg	1.5 mm powder-coated		3 mm powder-coated	
					Item no.	€	Item no.	€
350-450	350	449	200	3.15	11001483	49.00	13001483	82.80
400-450	399	449	200	3.40	11001485	52.30	13001485	90.40
400-500	399	499	250	4.40	11001486	55.30	13001486	96.10
450-500	449	499	200	3.70	11001487	63.40	13001487	107.50
450-560	448	558	250	6.70	12001495*	65.30	13001495	118.50
500-560	498	558	250	7.00	12001496*	69.00	13001496	131.50
500-630	498	628	300	8.90	12001497*	76.30	13001497	150.00
560-630	558	628	300	9.50	12001498*	88.70	13001498	169.00

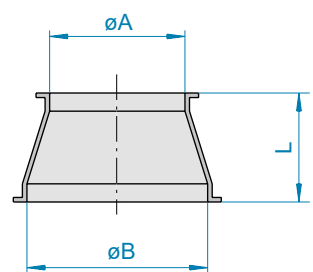
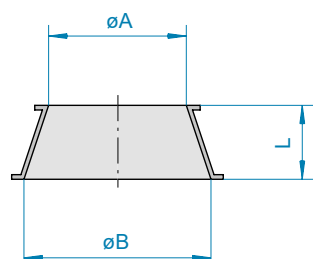
*2 mm



CONE PIECES

1330

- Diameter A + B = internal diameter with wall thickness of 1.5 mm
- Cone end partly cylindrical
- From DN 450 to 560 mm, dimensions for 2 mm pipework



■ End of cone in cylindrical shape

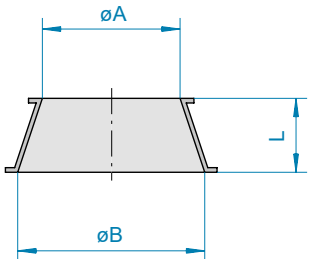
Galvanised and stainless steel (dimensions for 1.5 mm pipework)

DN	A	B	L	kg	1.5 mm galvanised		2 mm galvanised		1 mm stainless steel		2 mm stainless steel	
					Item no.	€	Item no.	€	Item no.	€	Item no.	€
60-80	57	77	60	0.17					11003488*	16.00		
60-100	57	100	100	0.25	11002492	12.40			11003492	16.50		
80-100	77	100	100	0.35	11002450	12.50			11003450	16.70		
80-120	77	120	80	0.35	11002478	13.30			11003478	17.80		
80-140	77	136	120	0.55	11002479	13.30			11003479	17.80		
80-150	77	150	140	0.65	11002489	15.10			11003489	18.70		
100-120	100	120	60	0.30	11002451	13.00			11003451	16.70	12003451	20.40
100-140	100	136	100	0.50	11002459	15.80			11003459	18.90		
100-150	100	150	95	0.50	11002452	13.80			11003452	19.50	12003452	27.80
100-175	100	175	120	0.70	11002464	15.30			11003464	20.20	12003464	31.30
100-200	100	200	120	0.75	11002453	19.00			11003453	22.90	12003453	33.10
100-250	100	250	200	1.45	11002454	20.30			11003454	23.50	12003454	34.30
120-140	120	136	100	0.55	11002466	17.60			11003466	20.50		
120-150	120	150	150	0.85	11002455	14.00			11003455	20.70	12003455	28.10
120-175	120	175	100	0.65	11002456	15.60			11003456	23.10	12003456	34.00
120-200	120	200	120	0.80	11002457	19.20			11003457	28.50	12003457	40.70
120-250	120	250	150	1.20	11002458	19.80			11003458	32.80	12003458	50.30
140-150	136	150	100	0.60	11002467	18.10			11003467	21.20		
140-175	136	175	100	0.65	11002468	20.50			11003468	23.90		
140-200	136	200	150	1.05	11002469	22.50			11003469	26.20		
150-175	150	175	100	0.60	11002460	16.30			11003460	21.20	12003460	29.60
150-200	150	200	100	0.75	11002461	16.70			11003461	24.10	12003461	35.10
150-224	150	220	150	1.15	11002472	26.30			11003472	30.70		
150-250	150	250	150	1.10	11002462	20.80			11003462	32.80	12003462	42.60
150-300	150	300	200	1.85	11002463	26.90			11003463	35.30	12003463	49.40
175-200	175	200	100	0.80	11002465	17.60			11003465	25.10	12003465	34.60
175-224	175	220	100	0.85	11002473	24.50			11003473	37.30		
200-224	200	220	100	0.85	11002474	25.10			11003474	30.70	12003474	41.80
200-250	200	250	120	1.10	11002470	20.70			11003470	32.80	12003470	47.20
200-300	200	300	150	1.55	11002471	26.90			11003471	41.00	12003471	63.70
224-250	220	250	100	1.00	11002476	27.60			11003476	33.70		
224-300	220	300	150	1.60	11002477	32.50			11003477	40.20	12003477	70.10
250-280	250	277	120	1.30	11002960	29.40			11003960*	44.50		
250-300	250	300	150	1.65	11002475	25.60			11003475	41.30	12003475	64.40
250-350	250	350	200	2.20	11002484	40.80			11003484	51.90	12003484	74.80
280-300	277	300	100	1.22	11002961	30.80			11003961*	46.30		
300-315	300	312	100	1.30	11002962	39.10			11003962*	54.40		
300-350	300	350	200	2.55	11002480	48.00			11003480	55.50	12003480	79.90
300-400	300	399	200	2.75	11002481	51.50			11003481	58.80	12003481	87.60

*1.5 mm

F FOOD GRADE
EC 1935/2004 plus FDA compliant

■ Shock explosion proof tested
up to 3 bar



DN	A	B	L	kg	1.5 mm galvanised		2 mm galvanised		1 mm stainless steel		2 mm stainless steel	
					Item no.	€	Item no.	€	Item no.	€	Item no.	€
315-350	312	350	120	1.65	11002963	42.50			11003963*	56.10		
350-400	350	399	200	2.95	11002482	55.00			11003482	61.00	12003482	84.40
350-450	350	449	200	3.15	11002483	58.30			11003483	66.40	12003483	99.20
400-450	399	449	200	3.40	11002485	59.80			11003485	72.60	12003485	96.80
400-500	399	499	250	4.40	11002486	65.10			11003486	81.30	12003486	120.50
450-500	449	499	200	3.70	11002487	66.30			11003487	90.50	12003487	125.50
450-560	448	558	250	6.70			12002495	71.40			12003495	148.50
500-560	498	558	250	7.00			12002496	75.10			12003496	160.00
500-630	498	628	300	8.90			12002497	82.80			12003497	174.00
560-630	558	628	300	9.50			12002498	96.30			12003498	187.50

*1.5 mm

F FOOD GRADE
EC 1935/2004 plus FDA compliant

Silokonsult
PROCESSTEKNIK SWEDEN AB

Kämpagatan 1
SE-532 36 Skara
+46 511 10365
info@silokonsult.se
www.silokonsult.se